

DISCLAIMER

The firmware utility listed here can cause permanent damage to your Digital Set Top Box if applied incorrectly. Before downloading any firmware updates, verify that your model number and current firmware revision match.

IN NO EVENT WILL TRIO Corporation Pty Ltd. BE LIABLE FOR ANY DAMAGES OF ANY KIND RELATING TO THE FIRMWARE UTILITIES DOWNLOADABLE THROUGH THIS SITE, INCLUDING BUT NOT LIMITED TO, COMPENSATORY DAMAGES, LOST PROFITS, LOST DATA OR ANY FORM OF SPECIAL, INCIDENTAL, INDIRECT, CONSEQUENTIAL OR PUNITIVE DAMAGES OF ANY KIND WHETHER BASED ON BREACH OF CONTRACT OR WARRANTY, NEGLIGENCE, PRODUCT LIABILITY OR ANY OTHER THEORY OF LIABILITY. TRIO Corporation Pty Ltd DISCLAIMS IMPLIED WARRANTIES OF MERCHANTABILITY AND FITNESS FOR ANY PARTICULAR PURPOSE.

- You will need a PC with Windows 98/2000/XP/NT. You will also need a [RS232 NULL MODEM](#) cable. You can purchase a Null Modem cable from www.pcau.com.au, product number: CB-NM-06
- Connect the RS232 cable from the PC serial port (COM) to the back of the set top box.
- You need to download the application file [STBLink.zip](#) to upgrade your STB.
- Unpack FILENAME.ZIP files to a folder. Your Windows Operating System should be able to unpack the file automatically, but if it doesn't, you can download winzip at www.winzip.com
- Double click on the stblink4.exe file to run the application. The main software program form will look like this as shown on Figure 1.

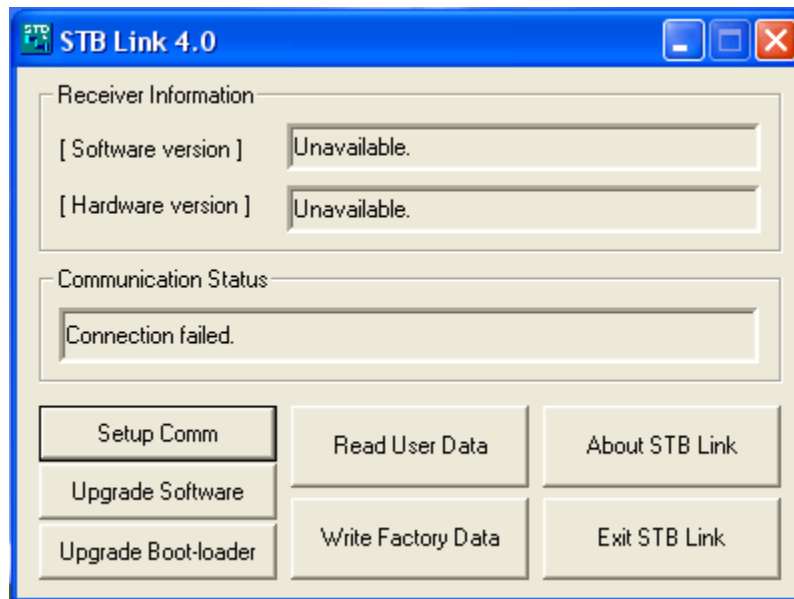


Figure 1 - STB Link 4.0 software program

- A connection has not been established as indicated on the communication status. Click on the 'Setup Comm' button. A Communication Setup dialog box appears as shown on Figure 2. Please select the appropriate COM port and click the OK button.

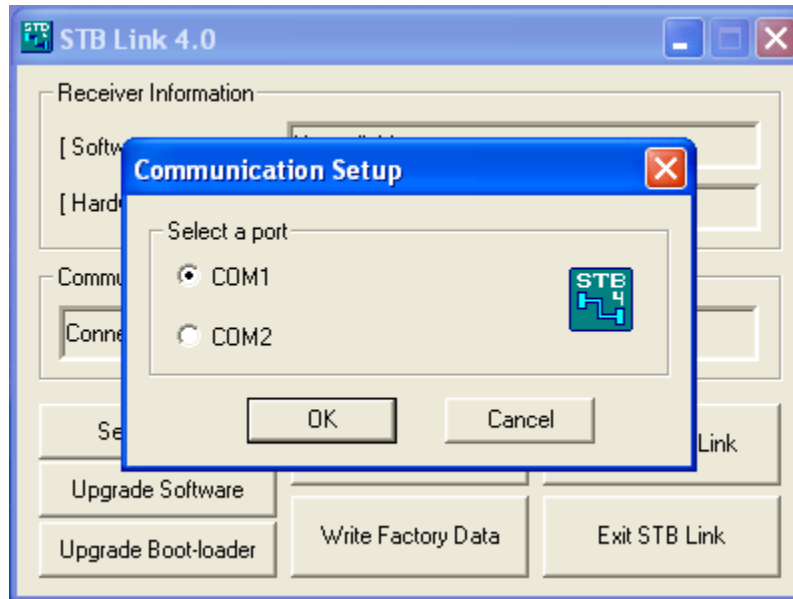


Figure 2 - Communication Setup

- Once the connection is successful, the receiver information and communication status is displayed as shown on Figure 3.

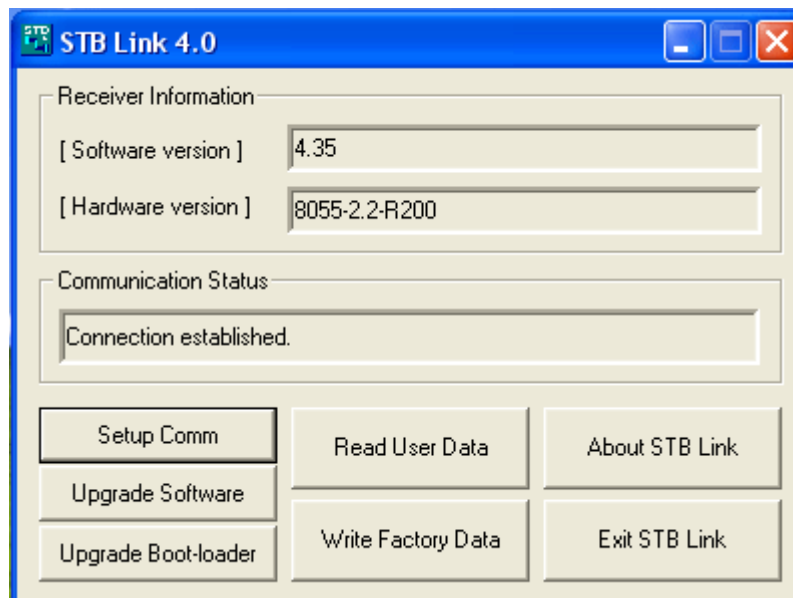


Figure 3 - Successful connection

- Click on the 'Upgrade Software' button. A Open file dialog box appears as shown on Figure 4. Please select the appropriate 'ROM image file (.bin)' format and click on the 'Open' button.

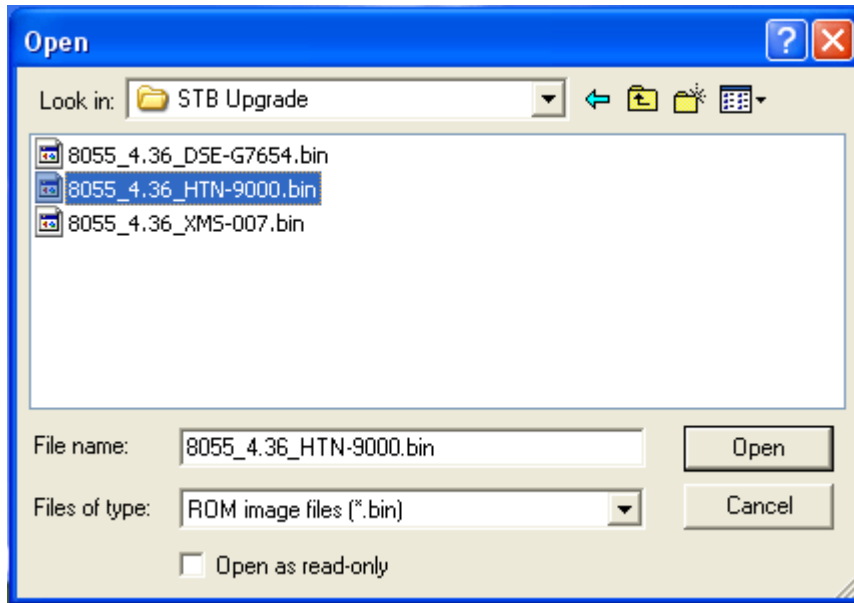


Figure 4 - Successful connection

- A Upgrade software dialog box appears as shown on Figure 5 indicates the progress of downloading the file to the set top box. The set top box display panel will read from D001 and increments as it continues to download.

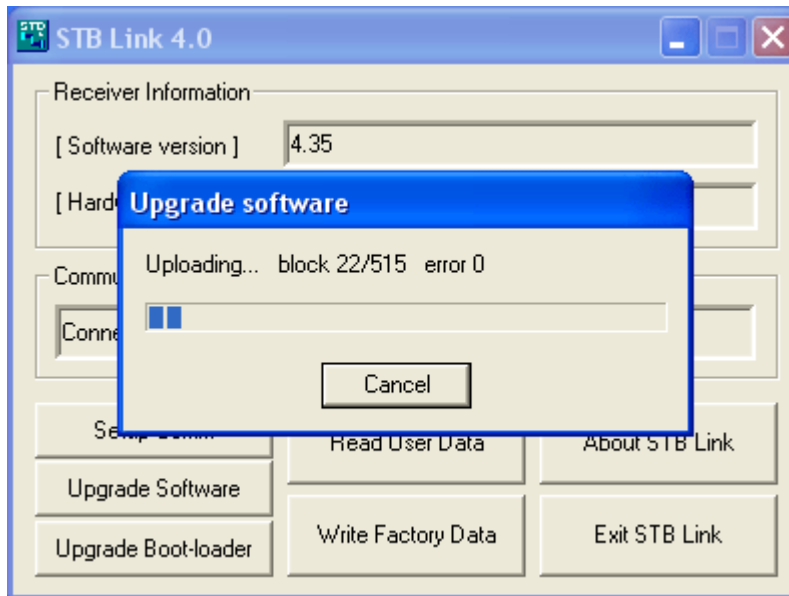


Figure 5 - Upgrade software uploading progress

- Do not disconnect any cables or turn off computer or turn off the set top box.
NOTE: Ensure the set top box is on a stable surface. Do not touch or bump the set top box during its upgrading process.
- The application will say it has completed the upgrade, but in fact, it is only indicating that it has completed downloading the file onto the set top box.
- Once the upgrade is completed, the set top box display panel will indicate GOOD. This is the only time it is safe to turn off the set top box. Do not turn it off before then.



TRIO Corporation Pty Ltd

Unit 2/93 Derby St Silverwater NSW 2128 Australia **Tel:** +61 2 9748 3607 **Fax:** +61 2 9748 3617

- You have completed the upgrade. Make sure you disconnect the RS232 cable and turn off the set top box from the power source.